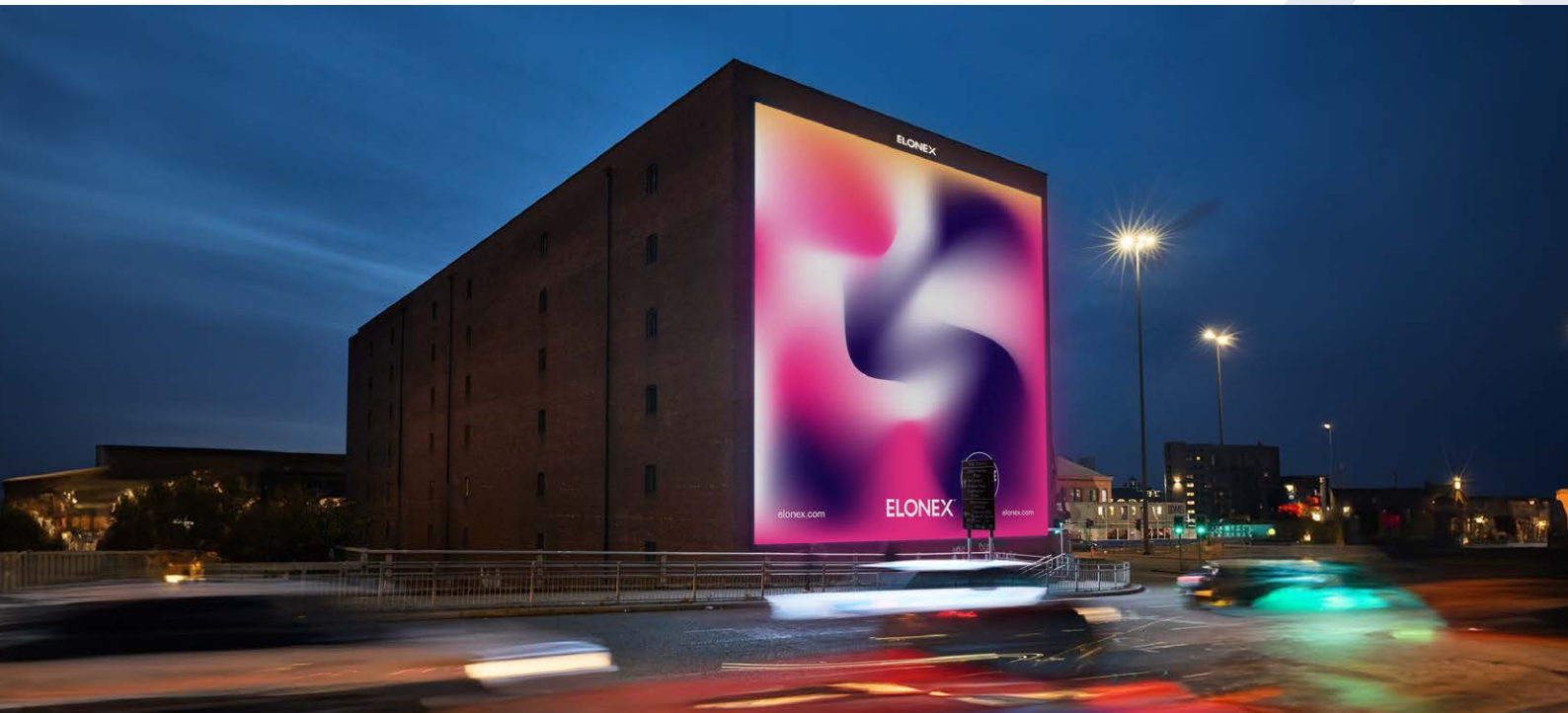


# The Manchester Screen

at Victoria Warehouse

Digital artwork specifications



## 📺 Artwork specs

**3024 pixels wide x 3024 pixels high**

Artwork must be created to the exact stated pixel resolution. No trim or bleed is required.

### Static display type

Only image files are accepted on this screen. Definitions of display types can be found at [elonex.com/creativeguidelines](http://elonex.com/creativeguidelines)

**10 second duration**

Our standard advert duration.

## 📁 File formats

**.JPG or .PNG files accepted only**

Minimum 72 DPI. RGB colour mode.  
Max file size of 25 MB.

## 🕒 Deadlines

Final artwork must be submitted  
**5 working days** before the start date

Design briefs must be provided no less than  
14 working days before the start date.

## 📁 File naming

**ManchesterScreen-ClientName.fileformat**

If specific day parting/advert playback is required, please label your files accordingly.

## ✉ Delivery & contact

For queries and delivery please  
**email:** [creative@elonex.com](mailto:creative@elonex.com)  
**(Please CC your account handler)**  
**or call:** 0871 222 3456

Files can also be sent via [WeTransfer.com](http://WeTransfer.com)

## New to digital out of home?

For tips on creating artwork and making the most out of your campaign, visit [elonex.com/creativeguidelines](http://elonex.com/creativeguidelines)

**ELONEX™**